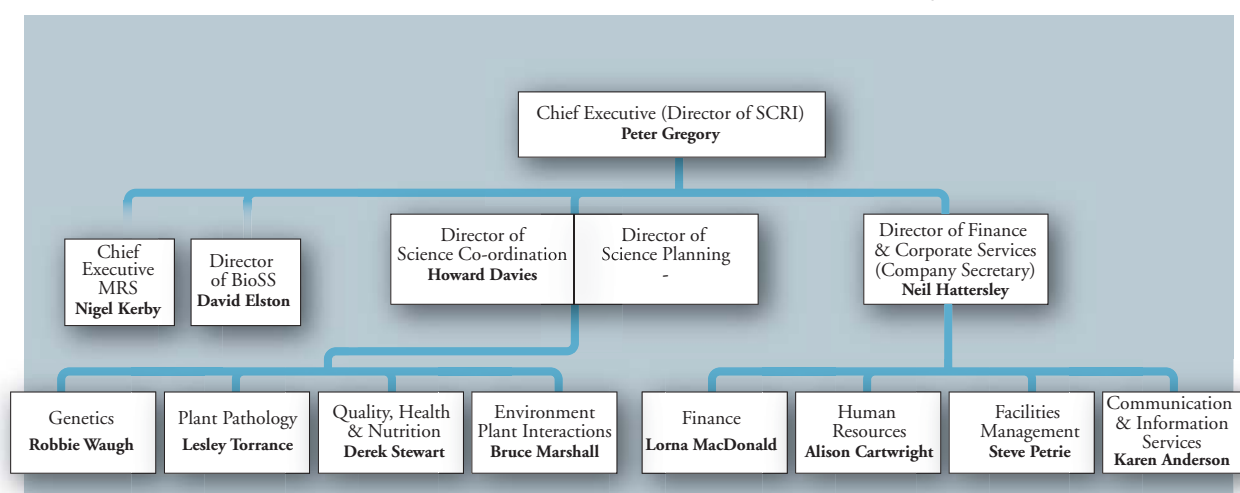


Organisational Structure

H.V. Davies

In the last annual report the science management structure of SCRI consisted of a Director, Deputy Director three Theme co-ordinators and nine Programme leaders. With the commissioning by SEERAD (from April 2006) of science Programme Area 1 'Profitable and Sustainable Agriculture-Plants' (co-ordinated by SCRI) the Institute has implemented structural changes which will ensure delivery of the commissioned research and which also flags its strategic intent to evolve its science base to provide contemporary solutions in areas of science relevant to modern crop production systems within appropriate ecological frameworks. Programme Area 1 consists of six Workpackages driven by individual Workpackage Leaders. The Workpackages are: Potato Genetics, Potato Pathology, Barley Genetics, Barley Pathology, Soft Fruit Genetics & Pathology and Sustainable

Crop Systems. SCRI has also identified the need for broader integration of research activities and resource management across Workpackages and has therefore developed, for its own purposes, four Programmes driven by Programme Leaders to fulfill these objectives. The Programmes are Genetics, Pathology, Quality Health & Nutrition and Environment Plant Interactions and represent areas of science in which SCRI has known strengths. The Director of Science Co-ordination has a major primary role in ensuring delivery on SEERAD and externally funded research and the Director of Science Planning (appointment in progress) will implement strategies for evolving the Institute's science focus and cross-disciplinarity. These, together with the Director of Finance and Corporate Services, will report directly to the Chief Executive, Prof. Peter Gregory.



Senior management structure for SCRI Group.