

Production of pathogen tested soft fruit for experimental use and commercialisation

Alison Dolan



The Scottish Crop Research Institute (SCRI) is the only designated UK centre for the production and maintenance of healthy mother plant stocks of *Rubus* and *Ribes*. It provides a continuous supply of material for entry into the Berryfruit Certification Schemes within the UK to ensure the production of planting material of the highest health for growers.

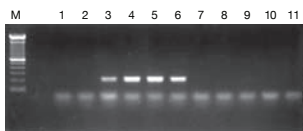
At SCRI we:

- constantly develop improved diagnostics
- validate testing protocols to satisfy RERAD and international plant health regulations
- operate to EPPO standards using world-leading biological, serological and molecular protocols (many devised at SCRI)
- investigate the risk of *P. idaei* on raspberry crops (RERAD FF grant)

New test methods for Blackcurrant reversion virus and Gooseberry vein banding virus



- Existing tests takes up to 2 years to complete
- New PCR diagnostic tests devised at SCRI only take 2 weeks to complete
- Can use leaf or dormant bud material
- We are currently validating the new PCR tests against existing methods



New test methods for *Phytophthora* in raspberry using PCR



- Improving sample preparation
- Investigating new primers to improve sensitivity
- Implementing steps to improve QA
- Using specific primers for identification of *Phytophthora fragariae* var *rubi* and *Phytophthora idaei*
- Developing real-time PCR TaqMan® probes



Fruithealth.co.uk (one of the Fruitgateway websites) is the site for UK and International soft fruit pathogen testing and maintenance of high-health germplasm.