

# Germinate CPC

## The Commonwealth Potato Collection Database at SCRI

Paul Shaw, Gaynor McKenzie, Gavin Ramsay, Glenn Bryan, Karen McLean and David Marshall

SCRI Genetics Programme: Scottish Crop Research Institute, Invergowrie, Dundee, DD2 5DA

[http://germinate.scri.ac.uk/germinate\\_cpc](http://germinate.scri.ac.uk/germinate_cpc)

[cpc@scri.ac.uk](mailto:cpc@scri.ac.uk)

The Germinate CPC database contains information on the UK's genebank of landrace and wild potatoes, the Commonwealth Potato Collection. The collection is one of a network of international potato genebanks (<http://www.potgenebank.org>), and is held in trust for humanity by SCRI with the support of the Scottish Government.

The collection comprises around 1500 accessions of about 80 wild and cultivated potato species. Passport, evaluation and molecular data for each accession is available in a fully searchable online database based on the Germinate platform developed at SCRI.

We hope to further enhance the value of the data contained within this database by including metabolomics data for 116 metabolites across the CPC accessions in addition to an extensive image library of wild potato species.

The Germinate CPC database is the first publically available database built on the Germinate platform <http://germinate.scri.ac.uk/germinate>.



Germinate 2.0

**GPC**  
Commonwealth Potato Collection

Navigation  
Home  
CPC History  
Accession Information  
Accession List  
Species  
Accession List  
Plant Passport  
Accession Evaluation Data  
CPC Digital Content  
Principal Coordinate Analysis  
Request Stock

Further Accession / Sample Data

This page displays information that we have on this particular accession. Passport data can be very fragmented so we probably don't have all information for all accessions.

Passport Item	Value
Accession Number	7338
Accession Name	7338
Species	Solanum
Genus	Solanum
Accession List	7338
Plant Passport	7338
Accession Evaluation Data	7338
CPC Digital Content	7338
Principal Coordinate Analysis	7338
Request Stock	7338

General Options  
About This Database  
CPC  
Contact Us


Quick Search

Geographic Data

Geographic Item	Value
Country Code (2 letter)	PE
Country Code (3 letter)	PERU
Country Name	PERU
State	CUSCO
Collecting Site	CALCO, Route of Puno
Latitude	-13.26
Longitude	-75.55
Elevation	3000

Collection Site Map

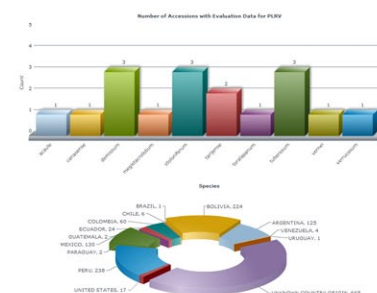
The map below proposes the collection site for this accession based on supplied information.



Passport Data Interface

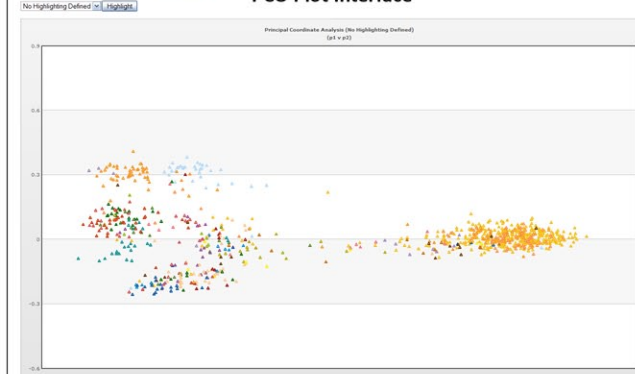
### Graphical Reports

Interactive graphical reports show overview statistics about the accessions held in the database. These range from the number of species that have resistance to a particular pathogen to the number of accessions collected in individual countries.



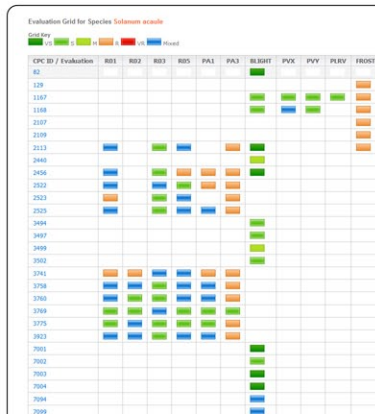
Database Graphical Reports

### PCO Plot Interface



### Principal Coordinate Analysis

Generated from AFLP data the PCO plots allow targeted interrogation of data held within the database. Users can decide using a simple interface which coordinates to plot in addition to selective highlighting of groups of interest for easier identification on the plot. Principal Co-ordinate Plots were generated using Genstat Ver9.0 using the Jaccard coefficient of similarity. Data from 6 AFLP primer combinations was combined to generate a similarity matrix from which plots were constructed in the first 5 dimensions.

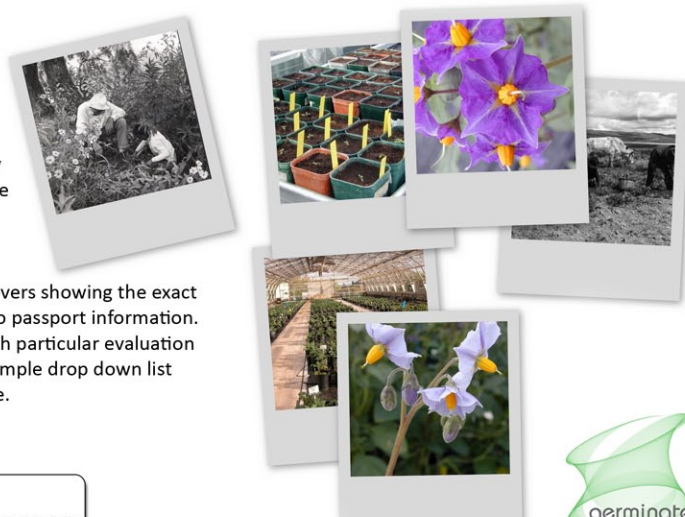


Evaluation Grid for *S. Acaule*

### Evaluation Grid

The evaluation grid utility allows the visual representation of resistance or susceptibility to pathogens and environmental factors across species. Our resistance data is based on a 6 point scale each assigned a corresponding colour to quickly show patterns across datasets. Colour schemes can be customised to suit the individual user and we offer various predefined colour palettes.

The grid is fully interactive and dynamic with mouseovers showing the exact evaluation score for a particular accession and links to passport information. Columns can also be sorted to arrange accessions with particular evaluation scores together. Displaying new data is done with a simple drop down list containing logical data groupings held in the database.



### Acknowledgements

The authors gratefully acknowledge the financial support of the BBSRC and RERAD